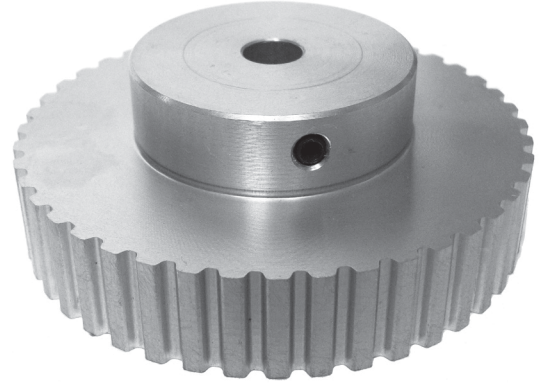


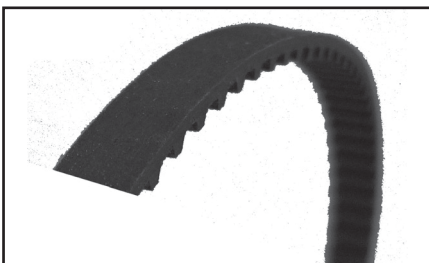
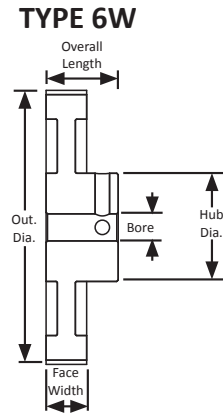
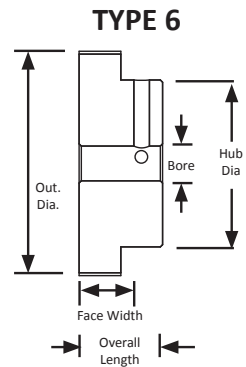
XL TIMING PULLEYS

METRIC TIMING PULLEY

0.200" Trapezoidal Pitch
For 9.5mm Wide Belts
Hub and No Flanges
Aluminum
Clear Anodized
Metric Finished Bore



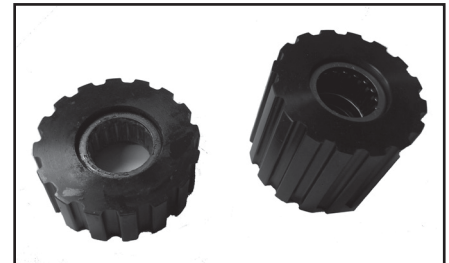
Part Number	No. of Teeth	Type	Pitch Dia. (mm)	Out. Dia. (mm)	Flange Dia. (mm)	Bore (mm)	Face Width (mm)	Overall Length (mm)	Hub Dia. (mm)	Set Screw
10XL037M6A6	10	6	16.2	15.7	6.0	14.3	20.6	9.5	11.0	M3
11XL037M6A6	11	6	17.8	17.3	6.0	14.3	20.6	9.5	13.0	M3
12XL037M6A6	12	6	19.4	18.9	6.0	14.3	20.6	9.5	14.0	2 x M3 @ 90°
14XL037M6A8	14	6	22.6	22.1	8.0	14.3	20.6	9.5	16.0	2 x M4 @ 90°
15XL037M6A8	15	6	24.3	23.7	8.0	14.3	22.2	9.5	17.0	2 x M4 @ 90°
16XL037M6A8	16	6	25.9	25.4	8.0	14.3	22.2	9.5	19.0	2 x M4 @ 90°
18XL037M6A8	18	6	29.1	28.6	8.0	14.3	22.2	9.5	22.0	2 x M4 @ 90°
20XL037M6A8	20	6	32.3	31.8	8.0	14.3	23.8	9.5	24.0	2 x M4 @ 90°
22XL037M6A8	22	6	35.6	35.1	8.0	14.3	23.8	9.5	27.0	2 x M4 @ 90°
24XL037M6A8	24	6	38.8	38.3	8.0	14.3	23.8	9.5	30.0	2 x M4 @ 90°
28XL037M6A8	28	6	45.3	44.8	8.0	14.3	23.8	9.5	32.0	2 x M4 @ 90°
30XL037M6A10	30	6	48.5	48.0	10.0	14.3	23.8	9.5	35.0	2 x M5 @ 90°
32XL037M6A10	32	6	51.7	51.2	10.0	14.3	25.4	9.5	38.0	2 x M5 @ 90°
36XL037M6A10	36	6	58.2	57.7	10.0	14.3	25.4	9.5	38.0	2 x M5 @ 90°
40XL037M6A10	40	6	64.7	64.2	10.0	14.3	25.4	9.5	38.0	2 x M5 @ 90°
42XL037M6A10	42	6	67.9	67.4	10.0	14.3	25.4	9.5	38.0	2 x M5 @ 90°
44XL037M6A10	44	6	71.1	70.6	10.0	14.3	25.4	9.5	38.0	2 x M5 @ 90°
48XL037M6A12	48	6	77.6	77.1	12.0	14.3	25.4	9.5	38.0	2 x M6 @ 90°
60XL037M6WA12	60	6W	97.0	96.5	12.0	14.3	25.4	9.5	38.0	2 x M6 @ 90°
72XL037M6WA12	72	6W	116.4	115.9	12.0	14.3	25.4	9.5	38.0	2 x M6 @ 90°



For matching XL pitch belts, see page 187.



For XL pitch pulley stock and flanges, see page 258.



For idler pulleys, see page 366.